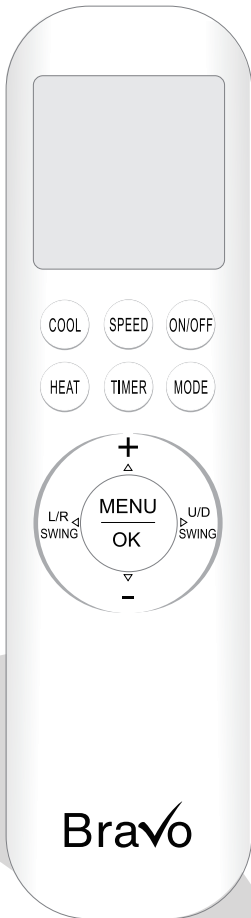




MORE THAN A COMPLIMENT

MINI SPLIT AIR CONDITIONING SYSTEM

Remote Control Manual



IMPORTANT NOTE:

Thank you for purchasing our air conditioning system. Please read this manual carefully before operating your new air conditioning units. Make sure to save this manual for future reference.

Precautions

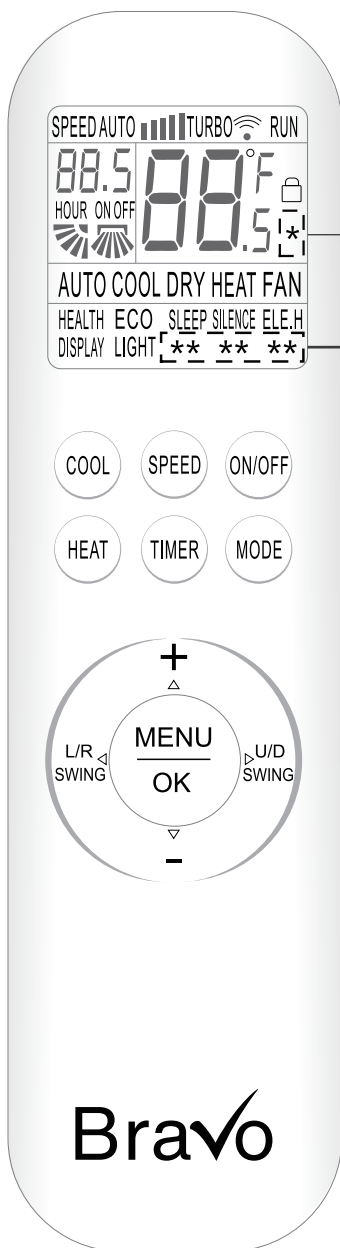
- Before first time use of the remote controller, install the batteries and ensure the “+” and “-” poles are correctly positioned.
- Ensure the remote controller is pointed to the signal receiving window and that there is no obstruction between them, the distance is 8m at the maximum.
- Do not let the remote controller drop or fling it at will.
Do not let any liquid in the remote controller.
Do not expose the remote controller directly to the sunlight or excessive heat.
- If the remote controller does not function normally, remove the batteries for 30 seconds before reinstall them. If that doesn't work, replace the batteries.
- When replacing the batteries, do not mix the new batteries with old ones or mix batteries of different types, which could cause failure of the remote controller.
- If the remote controller is not to be used for a long period of time, remove the batteries first, lest the leakage from them may damage the remote controller.
- Properly dispose the discarded batteries.

NOTE:


1. This is an universal remote controller which provide all the function buttons. Please understand that some of the buttons may not function, depending on the specific air conditioner you have purchased. (If a specific function is not available on the air conditioner, pressing the corresponding button will simply have no respond.)

2. HEAT and ELE.H functions are not available for cool only models, thus these two buttons do not work correspondingly.

Buttons Description



Type: A shown as %

Type: B shown as 

Type: A shown as
COSY HUMI iCLEAN

Type: B shown as
I-FEEL Anti-F iCLEAN

NOTE:

1. There are two different display types of remote control (type A and type B) , whichever is the actual type.
2. The remote controller display all symbols during power-on, other time only display symbols corresponding to current operation.

1. ON/OFF Button

- * Press this button to turn on/off the unit.
- * This will clear the existing timer and sleep settings.

2. MODE Button

- * Press this button, you can select operation mode as follows:

└─ AUTO ─ COOL ─ DRY ─ HEAT ─ FAN ─┘

Note: Heat mode is not available for cool only units.

Please read the Usage for Mode for a detailed description.

3. TIMER Button

- * With the unit on, press this button to set off timer or with it off to set on timer.
- * Press this button once, the “ON(OFF)” will flash. Press “ + ” or “ - ” to set the number of hours in which the unit will be turned on/off, with an interval of 0.5 hour, and a range of 0.5-24 hours.
- * Press it again to confirm the setting, the “ON (OFF)” will stop flashing.
- * If the “TIMER” button is not pressed within 10 seconds after the “ON (OFF)” start flashing, the timer setting will be exited.
- * If a timer setting is confirmed, press this button again will cancel it.

4. HEAT Button

- * Press this button to enter “HEAT” mode.

5. COOL Button

- * Press this button to enter “COOL” mode.

6. SPEED Button

- * Press this button, you can select fan speed as follows:

└─ Low ─ Mid ─ High ─ Turbo ─ Auto ─┘
(·) (■) (■ ■ ■) (TURBO) (AUTO)

Note: Auto air speed is not available in fan mode.

Turbo air speed is not available in auto mode.

This button is invalid in dry mode.

7. + & - Button

* Each time the “+” is pressed, the temperature setting will increase by 1°C(1°F) and each time the “-” is pressed, it will decrease by 1°C(1°F).

* The temperature setting range: 16°C (60°F) ~ 32°C(90°F).

Note: The temperature cannot be set in auto or fan mode.

8. MENU & OK Button

* Press the “MENU” button to enter the function selection mode. Then press Δ (+), ∇ (-), \triangleleft (L/R SWING) and \triangleright (U/D SWING) to choose the function which you want. After, press the “OK” button, turn on this function.

* In function selection mode, press Δ (+), ∇ (-), \triangleleft (L/R SWING) and \triangleright (U/D SWING), the character in LCD will be flashing if the function can be selected.

9. L/R SWING Button

* Press this button to activate up/down swing and press it again to turn off the swing function.

Note:

* **When the unit is on, press the “U/D SWING” button and hold for 3 seconds, the button will shift to be the functional button of “Rated swinging”, and then press the “U/D SWING” button to select the positions of Rated swinging.**

* **Only by pressing the “U/D SWING” button again and hold for 3 seconds or reinstall the battery of the remote control, can the “U/D SWING” button resume its original function. The power on/off button of the remote control can not enable the exit of the “Rated swinging” function.**

11. HEALTH

* When the unit is on, press the “MENU” button ,then press Δ (+), ∇ (-), \triangleleft (L/R SWING) and \triangleright (U/D SWING) to choose “HEALTH” character, when the “HEALTH” character will blink, and press the “OK” button to highlight (not highlight) the “HEALTH” character, which will activate (deactivate) the health function.

12. ECO

* In the cooling mode, the variable frequency air-conditioner will enter the ECO mode, which consumes the least electricity, and exit it automatically 8 hours after.

* The ECO mode is not available on the fixed frequency air conditioner.

* Changing modes or turning off the remote controller will automatically cancel the ECO function.

* In the cooling mode, press the “MENU” button, then press Δ (+), ∇ (-), \triangleleft (L/R SWING) and \triangleright (U/D SWING) to choose the “ECO” character, when the “ECO” character will blink, and press the “OK” button to highlight (not highlight) the “ECO” character , which will activate (deactivate) the ECO function.

Note: The electricity consumption is affected by the ambient temperature and the house structure etc., and when the ambient temperature is high or the house has a large area, be cautious to use the ECO mode.

13. SLEEP

* When the unit is on, press the “MENU” button, then press Δ (+), ∇ (-) , \triangleleft (L/R SWING) and \triangleright (U/D SWING) to choose the “SLEEP” character, when the “SLEEP” character will blink, and press the “OK” button to highlight (not highlight) the “SLEEP” character , which will activate (deactivate) the function of sleep mode.

* The unit will exit SLEEP mode after 10 hours of continuous operation and restore to the previous status.

Note: The sleep function cannot be activated in fan or auto mode.

In the sleep mode, the screen of the air-conditioner is off.

14. SILENCE

* When the unit is on, press the “MENU” button, then press Δ (+), ∇ (-) , \triangleleft (L/R SWING) and \triangleright (U/D SWING) to choose the “SILENCE” character, when the “SILENCE” character will blink, and press the “OK” button to highlight (not highlight) the “SILENCE” character, which will activate (deactivate) the function of silent wind.

15. ELE.H

* When the unit is on, press the “MENU” button, then press Δ (+), ∇ (-), \triangleleft (L/R SWING) and \triangleright (U/D SWING) to choose the “ELE.H” character, when the “ELE.H” character blinks, and press the “OK” button to highlight (not highlight) the “ELE.H” character , which will activate (deactivate) the function of auxiliary heating.

* The unit will activate the auxiliary heating function automatically according to the ambient temperature, so as to accelerate the heating.

*This button is disabled on some models.

16.DISPLAY

* Press the “MENU” button, then press Δ (+), ∇ (-), \triangleleft (L/R SWING) and \triangleright (U/D SWING) to choose the “DISPLAY” character, when the character “DISPLAY” will blink, and press the “OK” button to activate (deactivate) the function of screen display.

17. LIGHT

- * The unit will activate or deactivate automatically the function of display on the air-conditioner screen according to the indoor ambient brightness.
- * When the unit is on, press the “MENU” button, then press Δ (+), ∇ (-), \triangleleft (L/R SWING) and \triangleright (U/D SWING) to choose the “LIGHT” character, when the “LIGHT” character will blink, and press the “OK” button to highlight (not highlight) the character “LIGHT”, which will activate (deactivate) the function of light sensing

18. COSY (Only Type A)

- * When the air-conditioner is on under the modes of cooling, press the “MENU” button, then press Δ , ∇ , \triangleleft and \triangleright to choose the “COSY” character ,when the “COSY” character will blink, and press the “OK” button to highlight (not highlight) the character “COSY”, which will activate (deactivate) the function of cleaning.
- * When the “COSY” function is on, the fan speed is auto and it will cancel the swinging function.
- * When the “COSY” function is on, these operations that turn off the unit, change the mode, and set SLEEP, fan speed, swinging function will automatically exit the “COSY” function, then restore to the previous status.

19. HUMI (Only Type A)


- * Press the “MENU” button, then press Δ , ∇ , \triangleleft and \triangleright to choose the “HUMI” character, when the “HUMI” character will blink, and press the “OK” button to highlight (not highlight) the “HUMI” character , which will activate (deactivate) the humidifying function.

Note: The humidifying function is not available under the dry mode.

20. iCLEAN

- * The unit will clean automatically the dusts on the evaporator and dry or blow-dry the moisture.
- * When the air-conditioner is off, press the “MENU” button, then press Δ (+) , ∇ (-) , \triangleleft (L/R SWING) and \triangleright (U/D SWING) to choose the “iCLEAN” character , when the “iCLEAN” character will blink, and press the “OK” button to highlight (not highlight) the character “iCLEAN”, which will activate (deactivate) the function of cleaning.
- * The cleaning function will close automatically after 30 minutes.

21. Child-lock


- * Press the “HEAT” and “MODE” buttons at the same time and hold for at least 3 seconds to activate or deactivate the child-lock function.
- * When the child-lock function is activated, the remote control will indicate “”.

22. Anti-F (Only Type B)

* Anti-F function: When the unit is closed under the modes of cooling, dry or auto (cooling), it will continue to operate for about 3 minutes to dry the moisture on the evaporator, so as to prevent the accumulation of bacteria on the evaporator, which causes fungus and strange smell and is harmful to the health.

* When the unit is off, press the “MENU” button, then press Δ (+), ∇ (-), \triangleleft (L/R SWING) and \triangleright (U/D SWING) to choose the “Anti-F” character, when the “Anti-F” character will blink, and press the “OK” button to highlight (not highlight) the “Anti-F” character, which will activate (deactivate) the Anti-F function.

23. I-FEEL (Only Type B)

* When the unit is on, press the “MENU” button, then press Δ (+), ∇ (-), \triangleleft (L/R SWING) and \triangleright (U/D SWING) to choose the “I-FEEL” character, when the “I-FEEL” character will blink, and press the “OK” button to highlight (not highlight) the “I-FEEL” and “” character, which will activate (deactivate) the I-FEEL function.

24. °C/°F

* The temperature is displayed by default in Celsius.

* Press the “COOL” and “HEAT” buttons at the same time above 3 seconds, you can set the “C” or “F”.

Note: Temperature display in Fahrenheit is not available for some models. When temperature is displayed in Fahrenheit on the remote controller, it might be in Celsius on the unit, the function and operation of which will not be affected.

25. 8°C heating function

* 8°C heating function is only available for YKR-T/111E and YKR-T/121E remote control.

* Only in the heating mode in the power-on state, press the “MODE” and “+” buttons at the same time above 3 seconds to turn on or off the 8°C heating function.

* After turning on the 8°C heating function:

a. Press the “HEAT” button, or switch to mode, or select the sleep function, all can exit 8°C heating function.

b. Press the “SPEED”, “+”, “-” button is all non-effective.

c. Fahrenheit/Celsius switching function is non-effective. d. Turn off and on the unit again, 8°C heating function is still retained.

e. Press the “MENU” button, ELE.H function is not selectable.

Auto operation mode

1. Press the “ON/OFF” button, the air-conditioner starts to operate.
2. Press the “MODE” button, select auto operation mode.
3. By pressing the “SPEED” button, you can select fan speed from Low, Mid, High, Auto.
4. Press the “ON/OFF” button again, the air-conditioner stops.

Note: In the auto mode, the temperature settings is non-effective.

Cool/Heat operation mode

1. Press the “ON/OFF” button, the air-conditioner starts to operate.
2. Press the “MODE” button, select cool or heat operation mode.
3. By pressing the “+” or “-” button, you can set temperature from 16°C (60°F) to 32°C(90°F), the display changes as you press the button.
4. By pressing the “SPEED” button, you can select fan speed from Low, Mid, High, Turbo, Auto.
5. Press the “ON/OFF” button again, the air-conditioner stops

Note: The cold wind type has no heating function.

Fan operation mode

1. Press the “ON/OFF” button, the air-conditioner starts to operate.
2. Press the “MODE” button, select fan operation mode.
3. By pressing the “SPEED” button, you can select fan speed from Low, Mid, High.
4. Press the “ON/OFF” button again, the air-conditioner stops.

Note: In the fan mode, the temperature settings is non-effective.

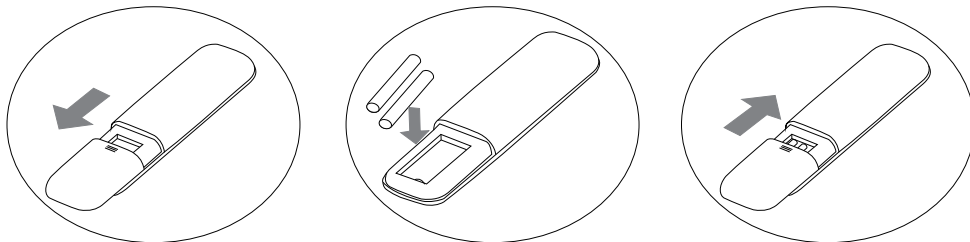
Dry operation mode

1. Press the “ON/OFF” button, the air-conditioner starts to operate.
2. Press the “MODE” button, select dry operation mode.
3. By pressing the “+” or “-” button, you can set temperature from 16°C (60°F) to 32°C(90°F), the display changes as you press the button.
4. Press the “ON/OFF” button again, the air-conditioner stops.

Note: In the dry mode, the speed settings is non-effective.

Usage

Fix batteries



- 1.Slide to open the battery cover according to the direction indicated by the arrowhead.
- 2.Insert two brand new batteries (7#), and position the batteries to the right electric poles (+&-).
- 3.Put back the battery cover.

Bravo

MORE THAN A COMPLIMENT

03042025